

Spatial accessibility and equity analysis of Amazon parcel lockers facilities

2022 I-NUF Conference, Long Beach CA

Presenter: Professor Miguel Figliozzi



Maseeh College of Engineering
and Computer Science

PORTLAND STATE UNIVERSITY

Acknowledgements

Jaclyn Shaefer, lead author of the paper

- Schaefer, J. S., & Figliozzi, M. A. (2021). Spatial accessibility and equity analysis of Amazon parcel lockers facilities. *Journal of Transport Geography*.



Acknowledgements

Research funded by:

FMRI

FREIGHT MOBILITY
RESEARCH INSTITUTE



Maseeh College of Engineering
and Computer Science

PORTLAND STATE UNIVERSITY

Motivation: e-commerce and equity

- During the COVID-19 lockdowns, home deliveries changed from being a desirable luxury or comfortable solution to a health-supporting and essential service for many COVID-19 at-risk populations.
- However, not all households are equal in terms of access to home deliveries.



Groups less likely to benefit from home deliveries:

- Low-income households
 - Households with lower educational levels
 - Small size and/or single member households
 - Households with less access to electronic devices/internet
 - Households that do not usually commute by auto or WFH
 - Non-white households
-

Home-based accessibility (HBA)

Home deliveries have become a health-supporting and essential service for many at-risk populations.

Home-based accessibility (HBA): defined as the ease of accessing essential home deliveries of products such as groceries and medicines without leaving home.

References HBA and Equity/EJ

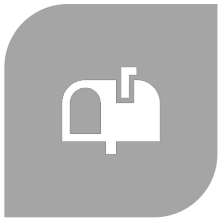
- Figliozi, M.A. and Unnikrishnan, A. (2021). Home-deliveries Before-During COVID-19 Lockdown: Accessibility, Environmental Justice, Equity, and Policy Implications. Transportation Research Part D: Transport and Environment
- Figliozi, M., & Unnikrishnan, A. (2021). Exploring the impact of socio-demographic characteristics, health concerns, and product type on home delivery rates and expenditures. Transportation Research Part A: Policy and Practice.



Business to Consumer Last Yard Delivery Types



ONTO THE
PORCH



INTO A MAILBOX



INSIDE THE
HOME OR CAR



INTO A STORAGE
LOCKER

Least Secure ----- Most Secure

OTHER FACTORS: time constrained households,
cost, convenience, reliability.

Rapid growth of locker systems

- Amazon in partnership with convenience stores (7-eleven, Plaid Pantry), banks, hotels, universities, malls...
- Rapid expansion (in early 2021, 180 in Portland)
- Promise of more foot traffic and business
- Support expansion of 1-day deliveries while controlling costs
- Potential automation
- Cost and environmental benefits



Lockers nearby



1 **Amazon Hub Counter - Dave's liquor** 🍷 1.7 mi

1601 East 4th Street, Long Beach, CA, ...

Mon-Sun: 8am - 11:45pm

[Show details](#)

Pick up here

2 **Amazon Hub Locker - Reference** 0.8 mi

350 the Promenade N, at Ross Dress for Less, Long Beach, CA, 90802-2480

Mon, Tue, Wed, Thu, Sun: 9am - 10pm

Fri-Sat: 8am - 10pm

Directions

You will find the Locker inside the Store..

[Hide details](#)

Pick up here

3 **Amazon Hub Counter - Your Hair N More** 0.9 mi

408 E 3rd St, Long Beach, CA, 90802

Mon-Fri: 10am - 7pm

Sat: 10am - 3pm

♿ Staff assistance at location

[Hide details](#)

Pick up here

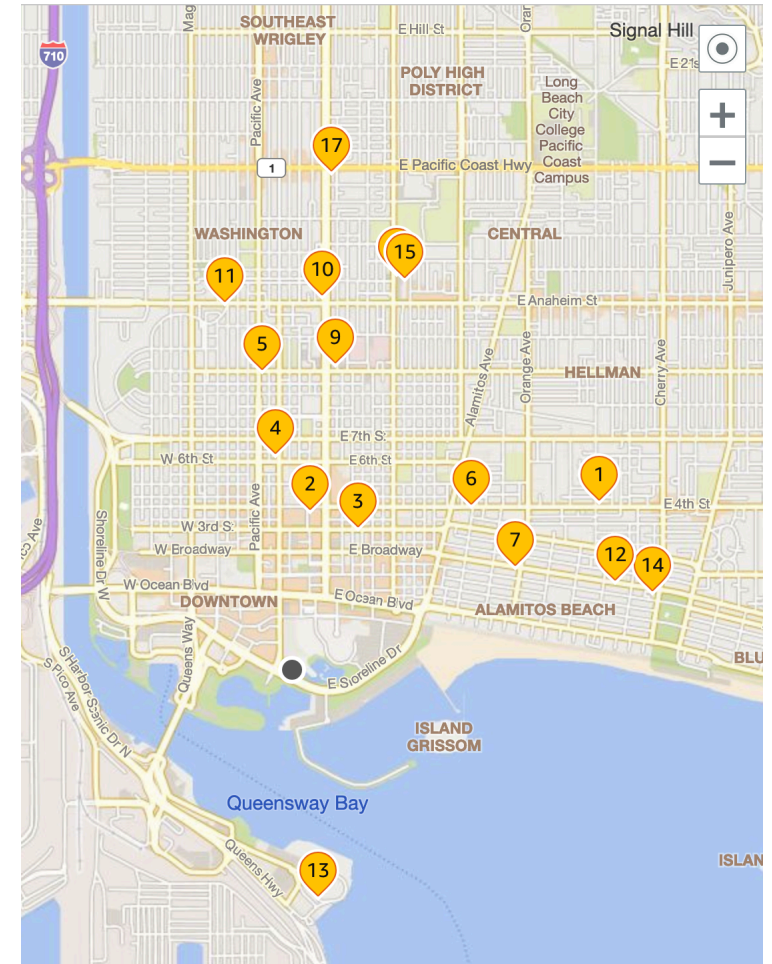
4 **Amazon Hub Locker - Ant** 1 mi

601 Pine Ave, at Rite Aid, Long Beach, ...

Mon-Sun: 7am - 10pm

[Show details](#)

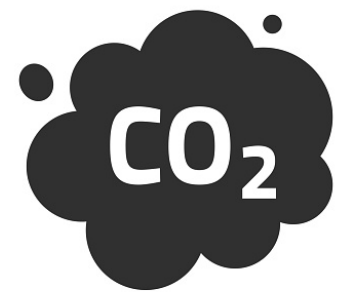
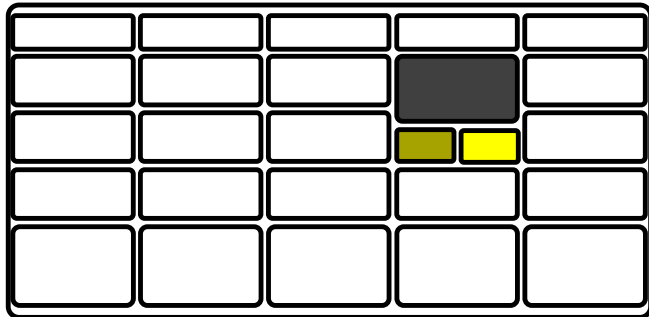
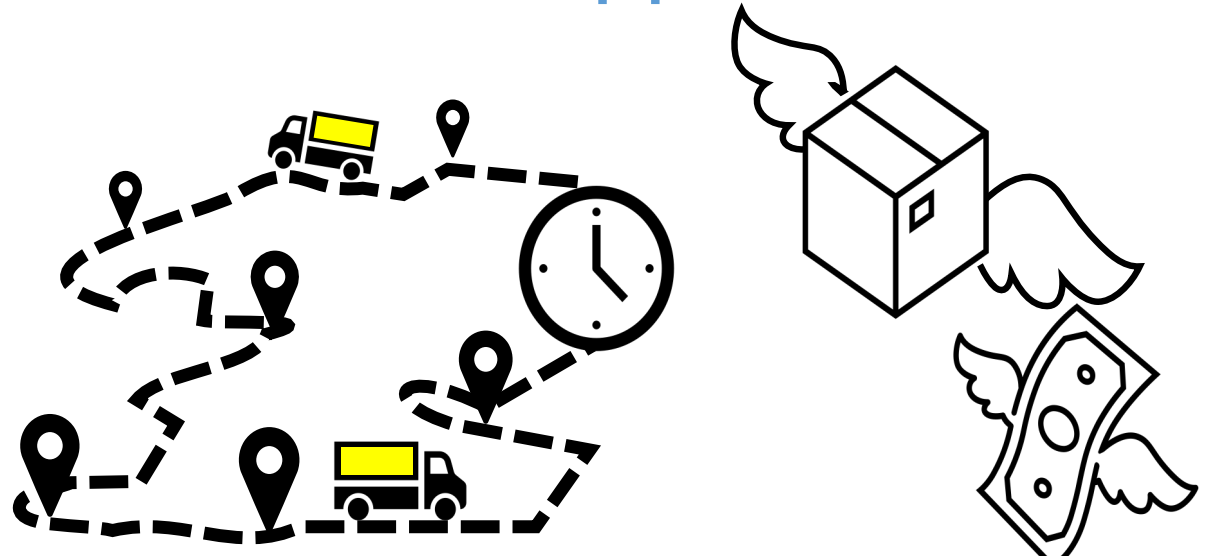
Pick up here



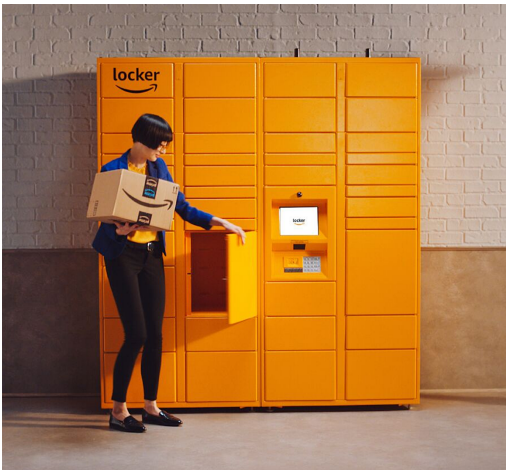
Research questions

- (a) How are lockers distributed with respect to accessibility measures such as population coverage and employment by mode of transportation? and
- (b) What are the equity implications of the current distribution of lockers?

Lockers: traditional research approach



Locker Accessibility



Focus on
PEOPLE

- Household income
- Per capita income
- Housing unit value

Income

- Computer access
- Internet access
- Type of internet

**Computer/
Internet**

- Age
- Race or origin
- Education attainment
- Employment status
- Etc.

**Non-Income
Demographic**

**Transportation/
Built Enviro.**

- Population density
- Type of housing
- Commute mode

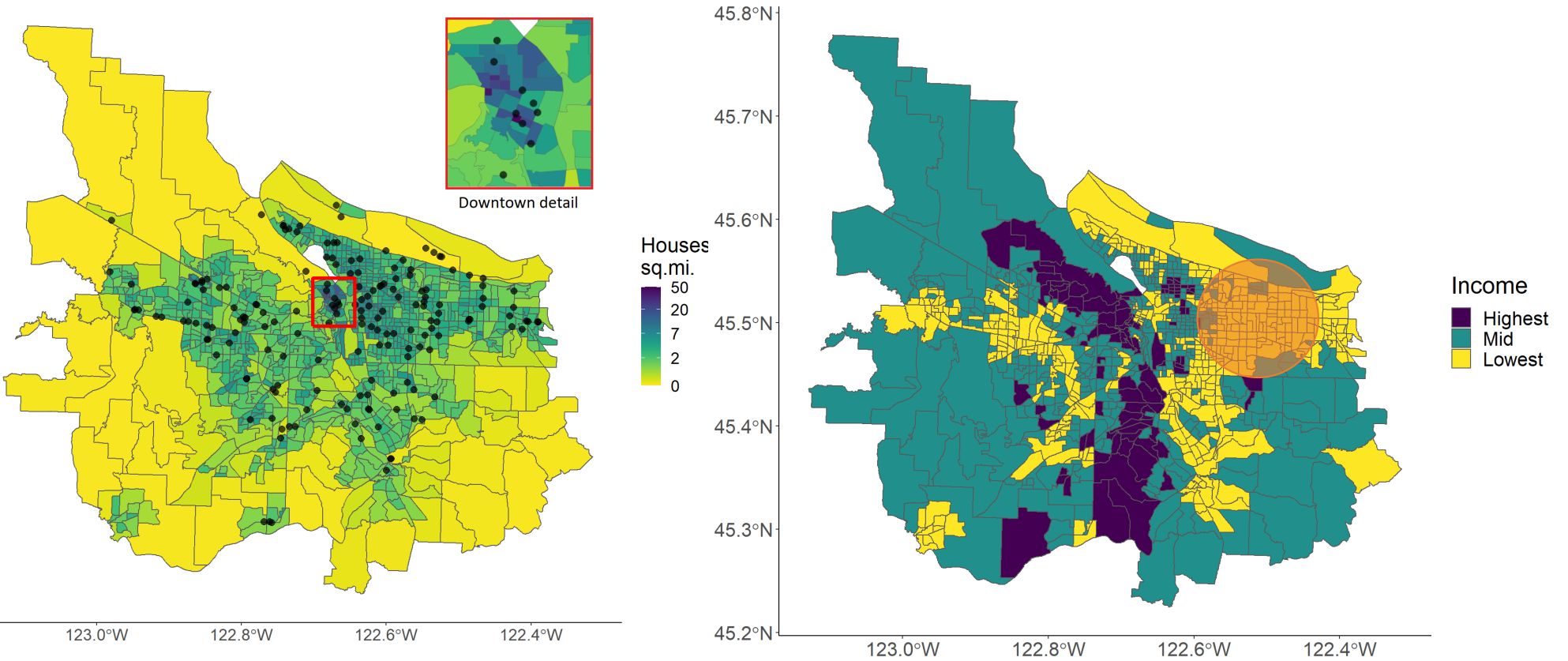
Methodology

- Google Places API
 - US Census Bureau Zip Code Business Patterns for employment data
 - US Census Bureau ACS for population and socio-demographic data
 - Geographic tools and methods: spatial correlations, kernel density, clustering
-

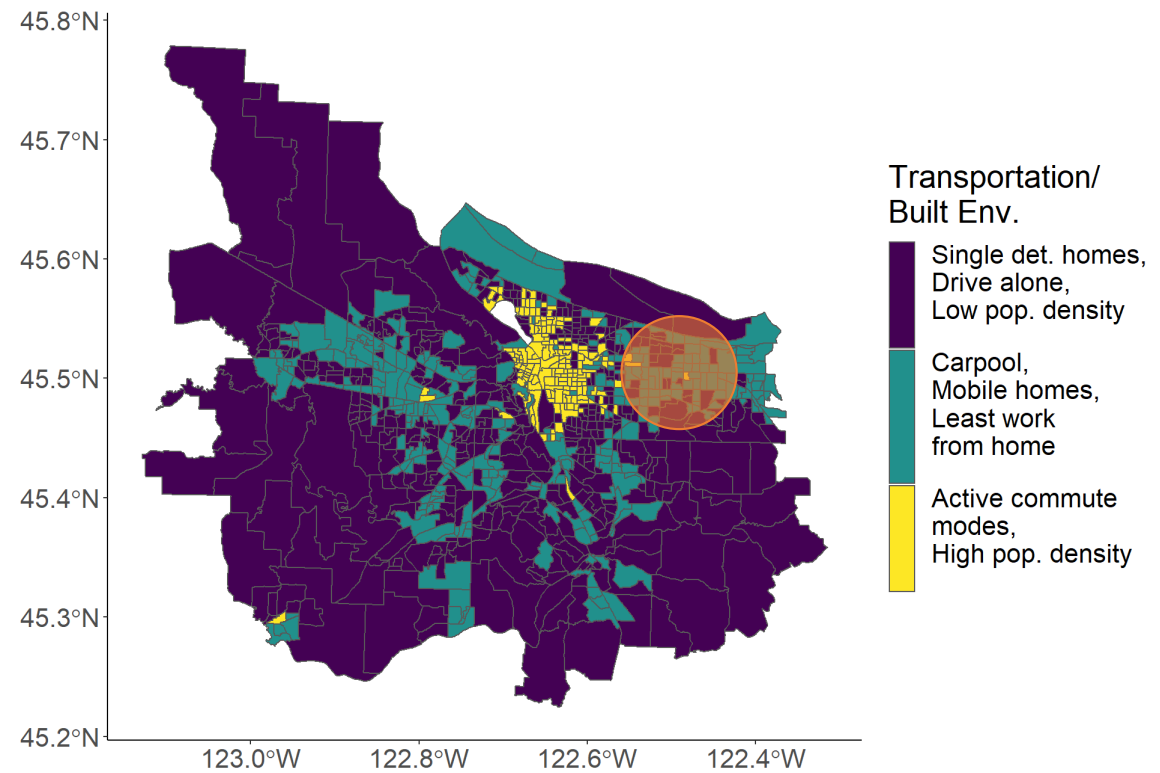
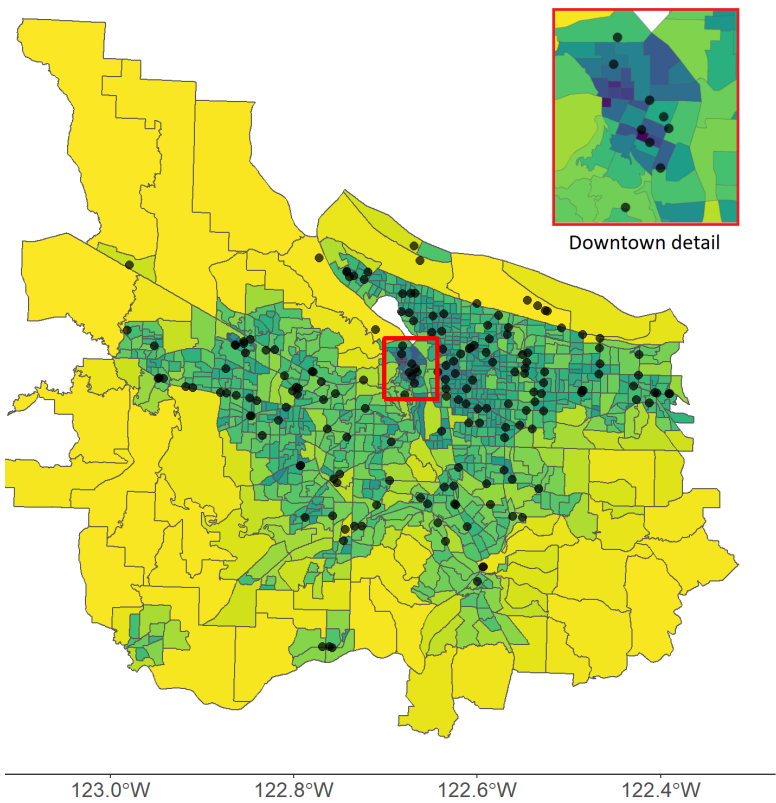
Accessibility by Mode

Mode (Range)	Households		Employment	
	HH (Thous.)	% of Total HH	Emp. (Thous.)	% of Total Emp.
Walk (0.25-0.5 Mi.)	81-232	12.6-36.1	103-285	11.7-32.4
Bike (1.5-3.0 Mi.)	546-605	84.9-94.0	673-785	76.4-89.1
Drive (3.0-5.0 Mi.)	605-624	94.0-97.0	785-828	89.1-93.9

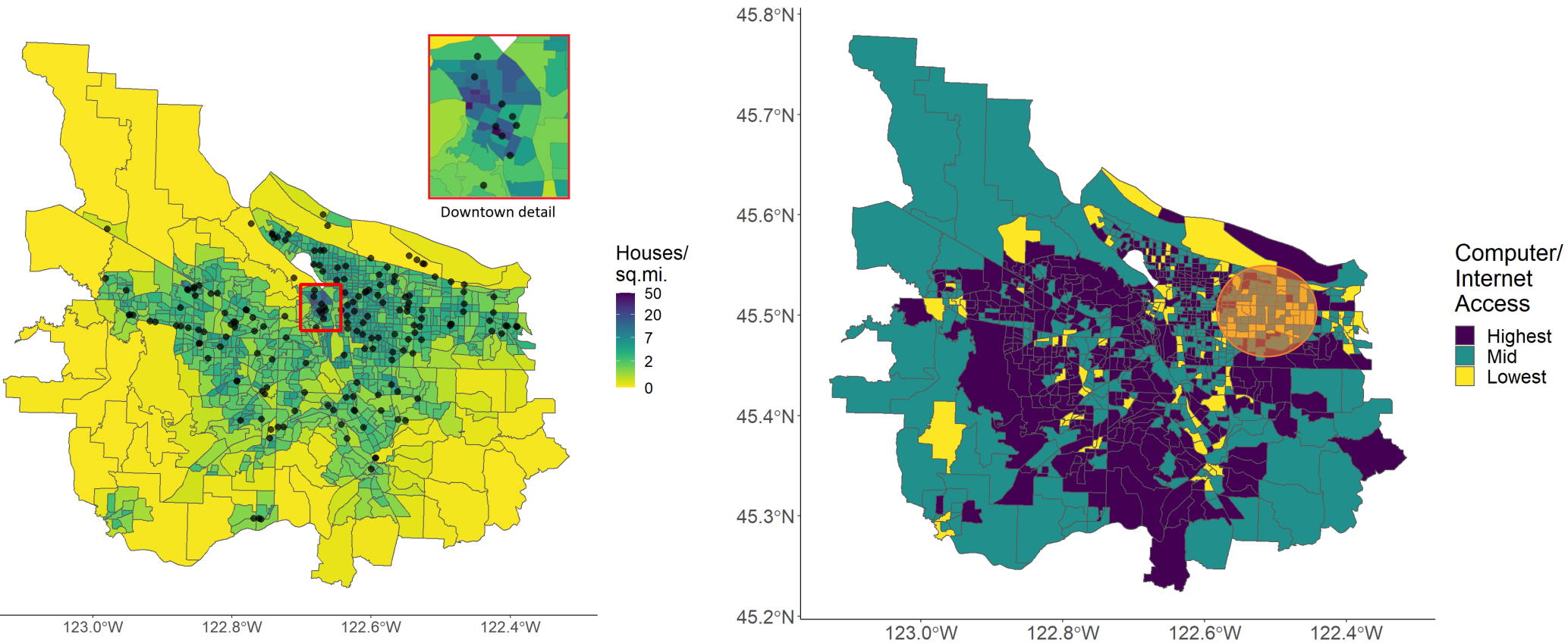
Locker Distribution and Income Clusters



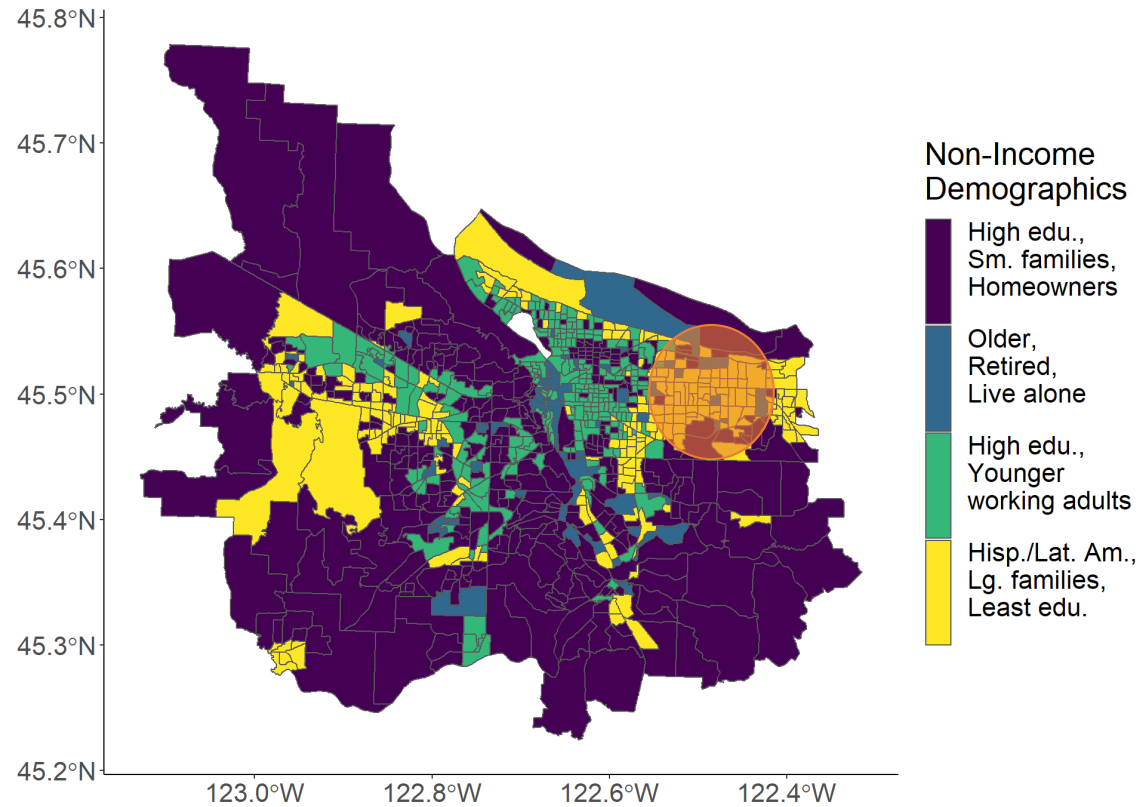
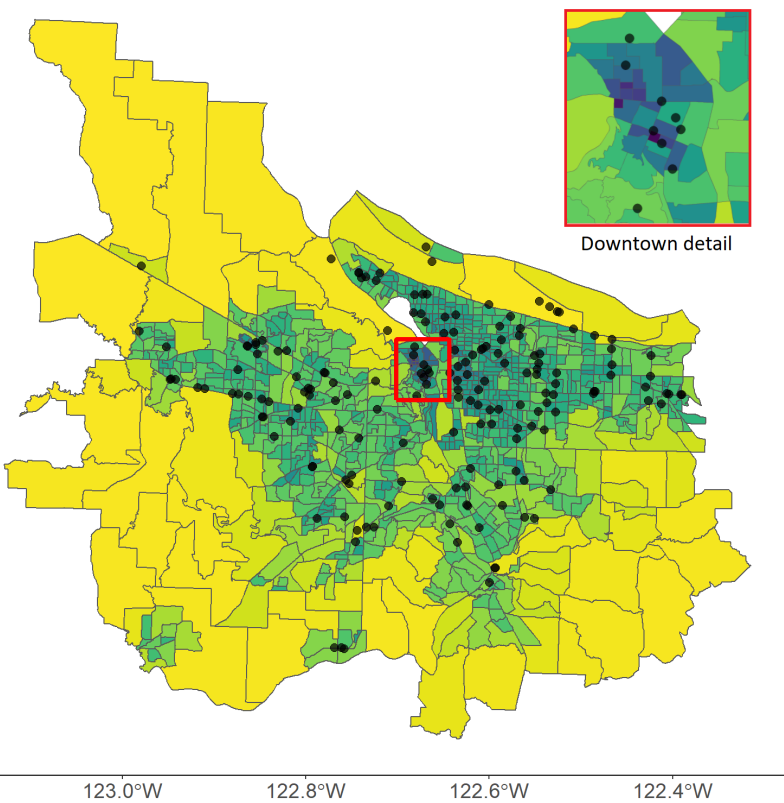
Locker Distribution and Trans. Built Env. Clusters



Locker Distribution and Internet clusters



Locker Distribution and Socio-Dem. Clusters



Population by race/ethnicity in the area studied

- White ~ 77% (US 60%)
- Black ~ 3% (US 12%)
- Asian ~ 8% (US 6%)
- 2+ ~ 7% (US 3%)
- Other ~ 5%

Hispanic ~ 12% (US 18%)

It is possible to quantify differences by Cluster

- Lockers per square mile
 - Lockers per person
 - Lockers per household
-

Key findings

- Lockers tend to be in mixed-use areas and can be utilized by a large percentage of the population.
 - The equity metrics indicate that the current distribution of lockers could be improved to reach traditionally underserved populations.
 - Clustering is useful, but also mapping/spatial analysis because there are pockets with low accessibility within large clusters.
-

Market failure?

- Amazon is a private, profit-seeking entity, and the placement of lockers may not necessarily match the allocation of lockers based on equity or need considerations
 - The term market failure implies a situation when a minimum level of accessibility or mobility that should be available to all is not met by private/public providers
-

Incentives to install lockers in certain areas?

- *Supplementary* common carrier (open) public parcel lockers in transit stations where they are needed the most to fill an equity or accessibility
 - Incentives for businesses that can be granted at the local level (parking, etc.)
-

Key findings and questions

- Lockers have many environmental and economic advantages, should policymakers do more to encourage the expansion of this type of last mile solution? How?
 - How to avoid market failures in low income communities that are currently underserved?
-

THANK YOU

FMRI

FREIGHT MOBILITY
RESEARCH INSTITUTE



Maseh College of Engineering
and Computer Science

PORTLAND STATE UNIVERSITY
